



61 Shrewsbury Lane, Plumstead, SE18 3JJ  
**£450,000**



## 61 Shrewsbury Lane, Plumstead, SE18 3JJ

**£450,000**

Perfect for anyone looking for a spacious, split level 3 bedroom property, in a quiet residential street that also benefits from excellent transport options into and across London!

This 3 bed, 1 bath maisonette in Shrewsbury Lane is offered chain free and with the chance to acquire the freehold to the property as part of the sale. No ground rent and no service charge!

To the front of the property is a private driveway with off street parking as well as grassed areas for anyone that fancies some gardening. To the rear of the property is a large private garden with a patio area, grass and storage.

From its position on top of Shooters Hill, you get stunning views across London seeing numerous major sights and lots of greenery, as well as huge amounts of natural light throughout the whole property.

You enter up some steps into a raised ground floor entrance, via the hallway into the open plan kitchen and dining room. With stone worktops and solid wood cabinets, giving lots of storage. and wooden flooring throughout this area.

Through to the living room which is spacious and comfortable.

## Description

Perfect for anyone looking for a spacious, split level 3 bedroom property, in a quiet residential street that also benefits from excellent transport options into and across London!

This 3 bed, 1 bath maisonette in Shrewsbury Lane is offered chain free and with the chance to acquire the freehold to the property as part of the sale. No ground rent and no service charge!

To the front of the property is a private driveway with off street parking as well as grassed areas for anyone that fancies some gardening. To the rear of the property is a large private garden with a patio area, grass and storage.

From its position on top of Shooters Hill, you get stunning views across London seeing numerous major sights and lots of greenery, as well as huge amounts of natural light throughout the whole property.

You enter up some steps into a raised ground floor entrance, via the hallway into the open plan kitchen and dining room. With stone worktops and solid wood cabinets, giving lots of storage. and wooden flooring throughout this area.

Through to the living room which is spacious and comfortable.

Upstairs you have the three bedrooms with built in storage in two. The third room could be used as a home office or single bedroom, depending on your need for the space.

Finishing off, you have a separate bathroom and wc.

Potential (subject to the necessary planning permissions etc) to develop the loft space into a fourth bedroom and en-suite bathroom.

## Situation

The property is 1.5 miles to Woolwich Arsenal Train Station with numerous links into and across London via bus or train/DLR/Elizabeth Line.

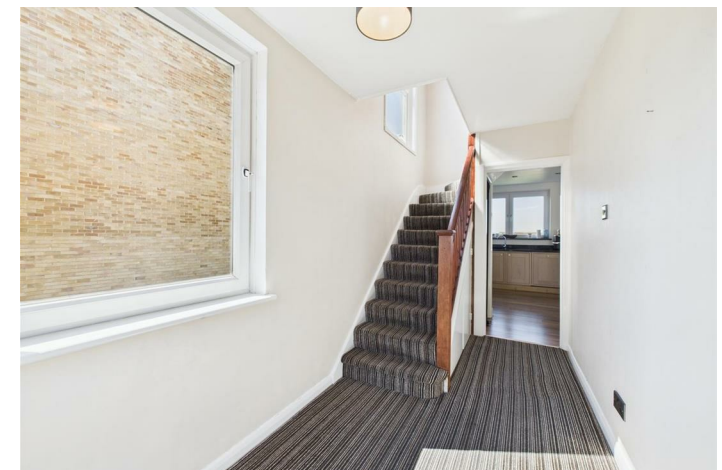
Shooters Hill Golf Club is 0.2 miles away, as well as Oxleas Woods and an abundance of shops, cafes and other amenities are available nearby.

The property is 0.5 miles to Christ Church C of E Primary School, Shooters Hill Sixth Form College, 0.9 miles to Ark Greenwich Secondary School, as well as many others.

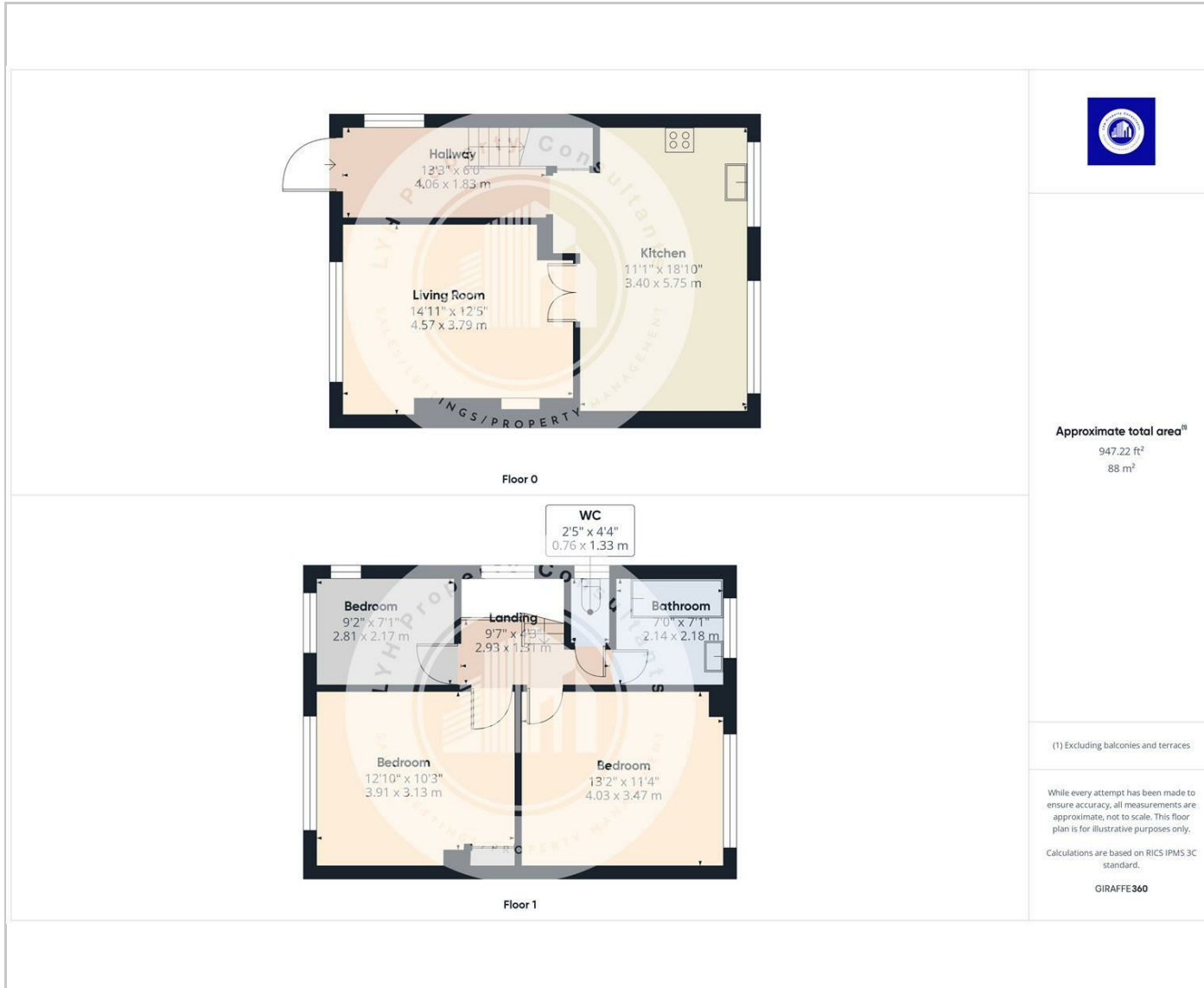
null

Council Tax Band: C

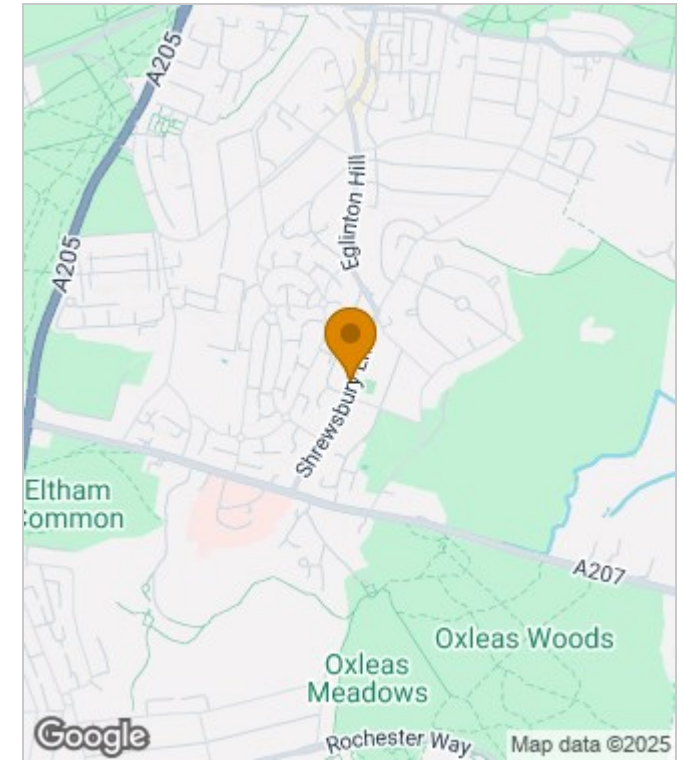
Available:



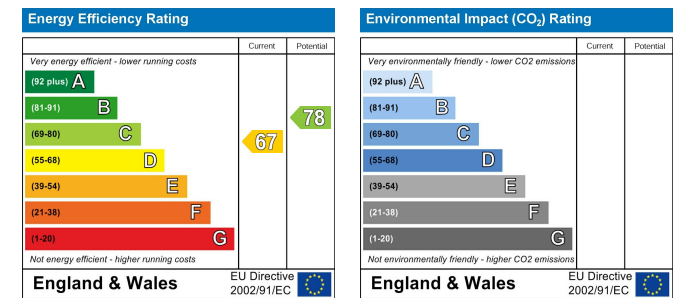
## Floor Plans



## Area Map



## Energy Performance Graph



These particulars, whilst believed to be accurate are set out as a general outline only for guidance and do not constitute any part of an offer or contract. Intending purchasers should not rely on them as statements of representation of fact, but must satisfy themselves by inspection or otherwise as to their accuracy. No person in this firm's employment has the authority to make or give any representation or warranty in respect of the property.

The Nucleus Brunel Way, Dartford, Kent, DA1 5GA

Tel: 02081758868 Email: [property@lyhpropertyconsultants.com](mailto:property@lyhpropertyconsultants.com) [www.lyhpropertyconsultants.com](http://www.lyhpropertyconsultants.com)